

# Interfocus

A KYOCERA GROUP COMPANY

## LanScope Cat Starter Navi Guide

The Starter Navi is a wizard you see when you first log in to the LanScope Cat Console. The wizard helps you set up a system-wide configuration of LanScope Cat. You can set up Data Update, Data Export, Alert Mail, and Initial Group settings through the wizard. This section guides you through the Starter Navi wizard screen by screen.

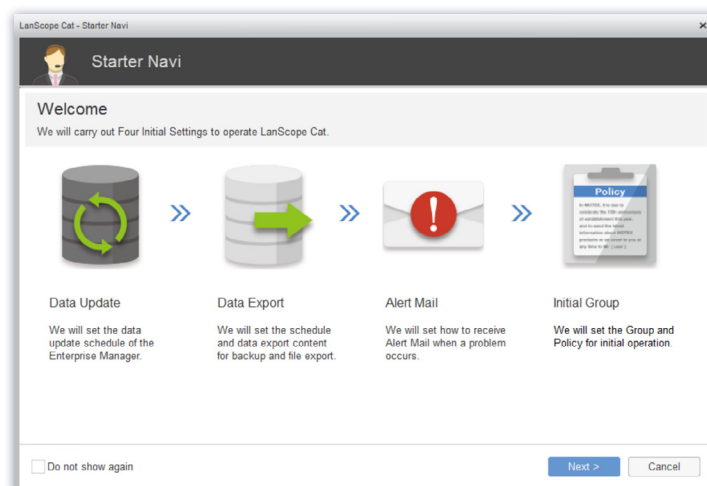


Figure 1: Starter Navi

## 1. Data Update Settings

On this screen, you can set up the time to run the Data Update task. This is a key task that allows you to have system-wide data available to view in your console. The default time is 2:00 AM.

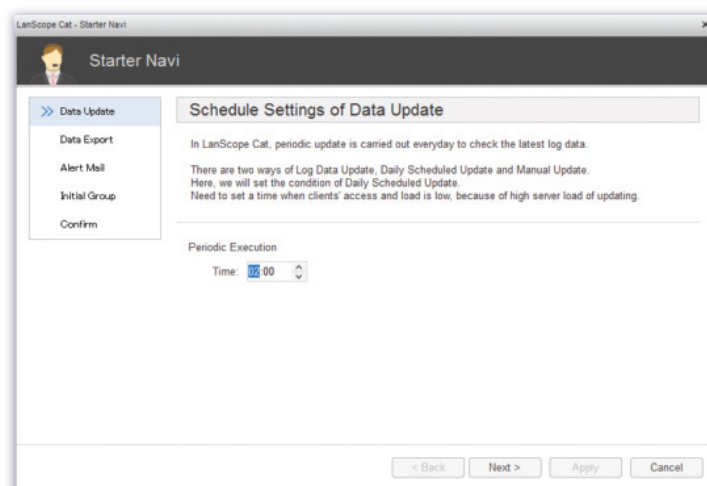


Figure 2: Data Update Setting

## 2. Data Export Settings

There are three data storage settings you can set up in LanScope Cat.

**Log Search Data:** When enabled, LanScope Cat creates separate database files to store data; with a maximum of five years of log data. The Log Search Data is used to perform queries within the LanScope Cat Web Console. When Log Search Data is disabled, LanScope Cat stores logs for up to 95 days by default but this number is configurable under System Data of LanScope Cat.

**CSV backup:** When enabled, LanScope Cat exports logs to CSV files. These files can be fed into analysis tools.

**Database backup:** When enabled, LanScope Cat backs up database files to specified directories. These files can be used to restore the LanScope Cat system.

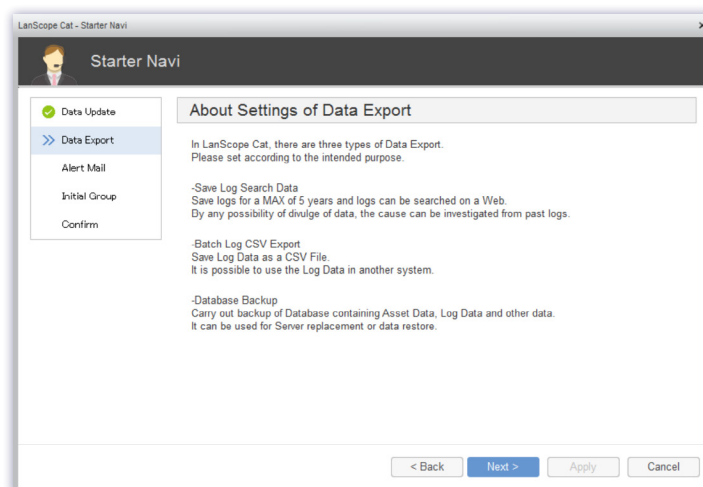


Figure 3: List of Data Exports

On the next screen, you can choose to Setup Using Recommended Settings, Setup Later, or Do Not Use. When you choose the Recommended Settings and click Next, you will find the settings are prepopulated.

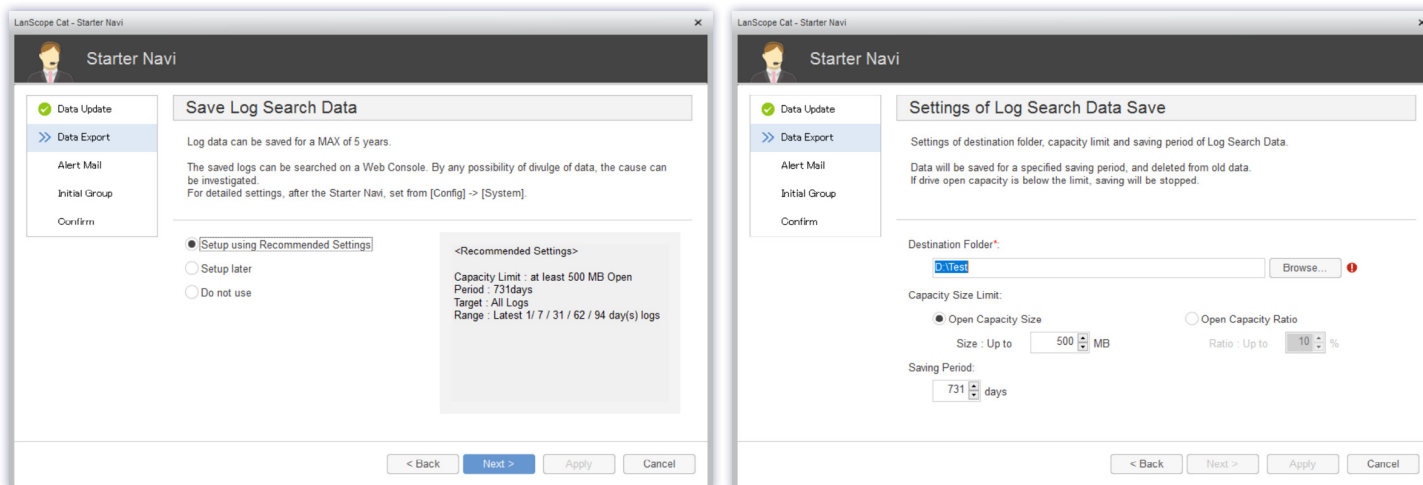


Figure 4: Log Search Data Settings

Next you can set the CSV backup settings. This is followed by Database backup settings.

The first screenshot shows the 'Batch Log CSV Export' settings. It includes a sidebar with 'Data Update', 'Data Export', 'Alert Mail', 'Initial Group', and 'Confirm'. The main area has a title 'Batch Log CSV Export' and instructions: 'Save Log data as CSV File Format. In case of using log data in another system, settings of Batch Log CSV Export is useful. For detailed settings, set at [Config] -> [System] after Starter Navi.' There are three radio buttons: 'Setup using Recommended Settings' (selected), 'Setup later', and 'Do not use'. A box labeled '<Recommended Settings>' contains: 'ExecutionTime: 4:00', 'Format: 1DayDataPerFile', 'Target: All Logs', and 'Range: Latest 1/ 7/ 31/ 62/ 94 day(s) logs'. At the bottom are buttons for '< Back', 'Next >', 'Apply', and 'Cancel'.

The second screenshot shows the 'Settings of Batch Log CSV Export'. It includes the same sidebar. The main area has a title 'Settings of Batch Log CSV Export' and instructions: 'Settings of save destination folder of Log Data and execution time. Please check if there is enough open capacity in the drive where the Log Data will be saved. Need to set a time after the Data Update Time and when clients' access and load is low.' There is a 'Destination Folder' field with a 'Browse...' button. Under 'Capacity Alert', there are two radio buttons: 'Open Capacity Size' (selected) and 'Open Capacity Ratio'. The 'Open Capacity Size' section has 'Size: Up to' set to '500' MB. The 'Open Capacity Ratio' section has 'Ratio: Up to' set to '10' %. There is an 'Execution Time' field set to '04:00'. At the bottom are buttons for '< Back', 'Next >', 'Apply', and 'Cancel'.

Figure 5: CSV Backup Settings

The first screenshot shows the 'Database Backup' settings. It includes the same sidebar. The main area has a title 'Database Backup' and instructions: 'Backup of the LanScope Cat Database. In case of server failure or replacement, the backup data can be used to restore the Database. For detailed settings, set at [Config] -> [System] after Starter Navi.' There are three radio buttons: 'Setup using Recommended Settings' (selected), 'Setup later', and 'Do not use'. A box labeled '<Recommended Settings>' contains: 'Execution Time: 3:00', 'Schedule: Daily', and 'Data: save only latest data'. At the bottom are buttons for '< Back', 'Next >', 'Apply', and 'Cancel'.

The second screenshot shows the 'Settings of Database Backup'. It includes the same sidebar. The main area has a title 'Settings of Database Backup' and instructions: 'Settings of the backup destination and execution date. Need to set a time when clients' access and load is low because of high server load of updating.' There is a 'Destination Folder' section with two checked items: 'System Data' (with path 'D:\SystemData') and 'Log Search Data' (with path 'D:\LogSearchData'). Each has a 'Browse...' button. Under 'Capacity Alert', there are two radio buttons: 'Open Capacity Size' (selected) and 'Open Capacity Ratio'. The 'Open Capacity Size' section has 'Size: Up to' set to '500' MB. The 'Open Capacity Ratio' section has 'Ratio: Up to' set to '10' %. At the bottom are buttons for '< Back', 'Next >', 'Apply', and 'Cancel'.

Figure 6: Database Backup Settings

## 3. Alert Mail Settings

LanScope Cat can send alerts by email to a specified recipient. When you choose to set this up, you'll provide information for sending emails from your email server. You'll need your:

- **SMTP Server Name** and its **Port Number**, which should be reachable from the LanScope Cat server.
- **SMTP Authentication Credentials** (if required).
- **Sender information:**
  - **Account:** Name of email account
  - **Display Name:** Name of the sender
  - **Mail Address:** This email address will be used as the sender

Figure 7: Email Settings, Page 1

Then, click Connection Test to SMTP Server. Once you have a successful connection, you can set up your recipients.

First, name the recipient group and specify one email address to receive the email. You can modify this setting in the LanScope Cat Console later.

Figure 8: Email Settings, Page 2

## 4. Create Groups and Assign Policies

A **Group** is an instance of managed endpoints on LanScope Cat. A **Policy** defines the collection of logs, alert settings, and control settings. A **Group** can be associated with a **Policy**. Next, we'll create a group and see how to setup policies.

First, give the group a unique name. Next, you'll create the default policy for the group. Check off the policies you want to apply. Here is a list of policies built into LanScope Cat that you can choose from:

- **Asset:** Collects hardware and software information and alerts on changes to assets such as memory, CPU size, and new installations.
- **Running Apps:** Collects process names on endpoints.
- **Blocked Apps:** By default, no apps are blocked. If enabled, additional settings are required within the LanScope Cat Console.
- **Operation:** Collects user activity, such as file and window action.
- **Print:** Collects printing activity on endpoints.
- **Communications Device:** Collects network connection information of engaged WiFi and Bluetooth devices.
- **Device:** Collects USB information of engaged devices used on endpoints.
- **Web Access:** Collects website access activity.
- **Apps ID Monitoring:** Collects credentials for specified application logon screens. Additional settings are required within the LanScope Cat Console.
- **Mail:** Collects Outlook email information (sender, receiver, subject, attachment name, etc.)

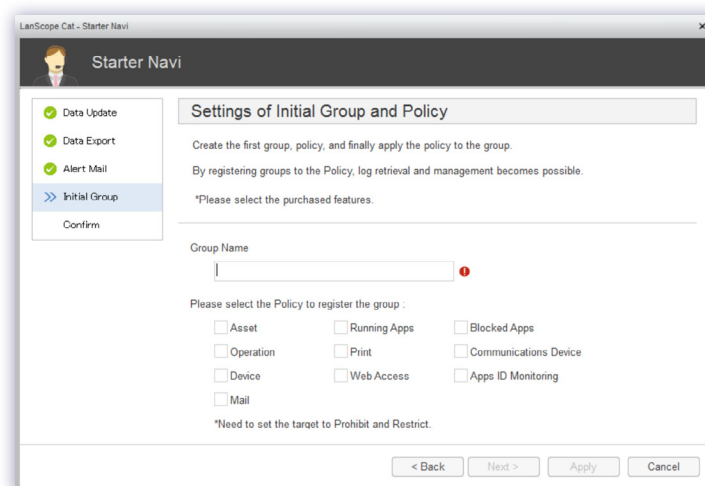


Figure 9 Group and Policy settings

## 5. Review

Before proceeding, you have a chance to review your settings. Once reviewed, click Apply. It may take several minutes for the settings to be applied.

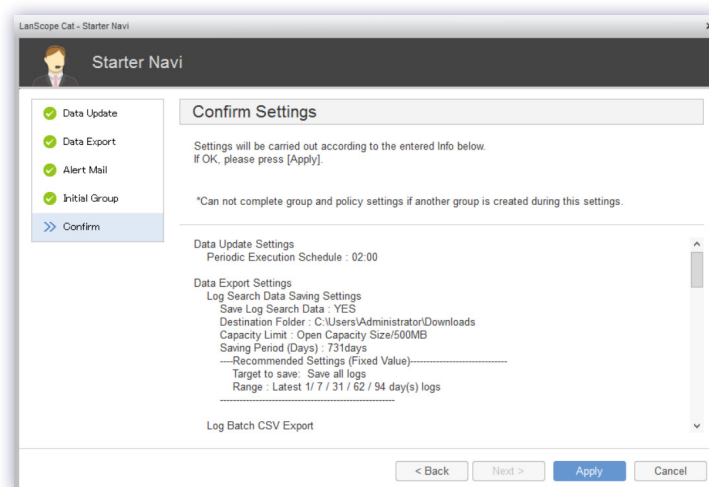


Figure 10 Review settings

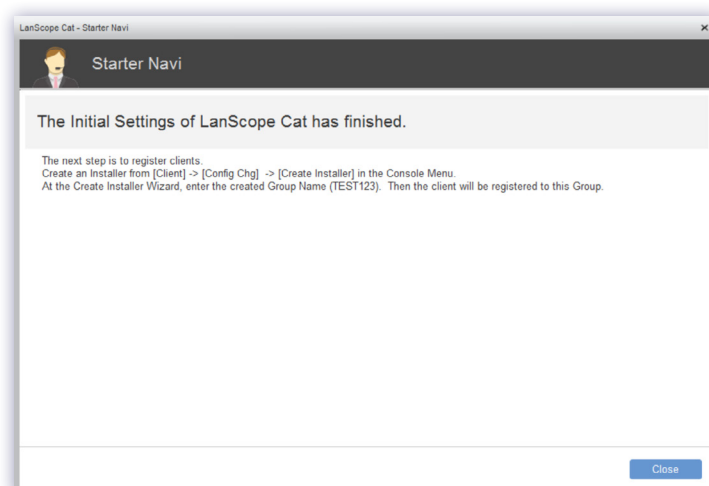


Figure 11 Initial settings finished

When you get to the above screen, click Close to access the LanScope Cat Console.